



**Trademark
HARDWARE**

INSTALLATION GUIDE

SUPERGRIT® PROFILES FOR NEW CONCRETE STAIRS

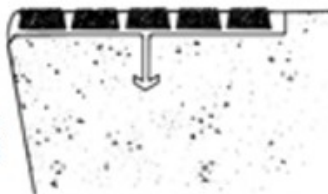
Fresh Concrete Step:

1. Sure-hold anchor for easy placement in fresh concrete step. Install so that there is no projection past the face of the riser.
2. Safety nosings going into new poured concrete or cement fill shall be installed before "INITIAL SET" of the concrete or cement occurs.
3. Treads should finish flush with the top of the traffic surface.

DETAIL

Sure-hold anchor in concrete step.

Designed to install so that there is no projection past the face of the riser.



SUPERGRIT® PROFILES FOR STEEL PAN

Steel Pan Step:

1. Sure-hold anchor also can be applied in sloped riser steel pan step. Nose design provides better fit at formed edge of steel pan.
2. Treads should finish flush with the top of the traffic surface.

DETAIL

Sure-hold anchor in sloped riser steel pan step.

NOTE: Nose design provides better fit at formed edge of steel pan.

